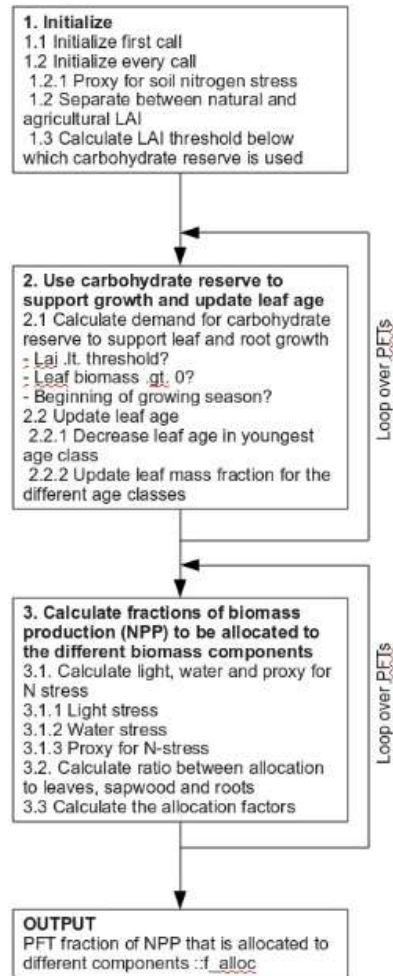


- Sharpe, P.J.H., and Rykiel, E.J. (1991), Modelling integrated response of plants to multiple stresses. In: Response of Plants to Multiple Stresses (eds Mooney, H.A., Winner, W.E., Pell, E.J.), pp. 205-224, Academic Press, San Diego, CA.

FLOWCHART :



REVISIONS : - No record of the revisions before 31/03/2009

A lot is described here:

<http://forge.ipsl.jussieu.fr/orchidee/wiki/OrchideeDocumentation>

1. Add path to the doxygen binary (1.6.2)

```
setenv PATH /home/users/mmancip/PROG/bin:$PATH
if ! ($?LD_LIBRARY_PATH) then
    setenv LD_LIBRARY_PATH /home/users/mmancip/PROG/lib
else
    setenv LD_LIBRARY_PATH /home/users/mmancip/PROG/lib:${LD_LIBRARY_PATH}
endif
```

2. Get some scripts

```
alias recup_TOOLS 'svn co svn://forge.ipsl.jussieu.fr/orchidee/trunk/TOOLS'
recup_TOOLS
```

3. Get standard architecture

```
alias svn_ano 'svn co http://forge.ipsl.jussieu.fr/igcmg/svn/modipsl/trunk'
svn_ano
```

4. Get Martial's personal branch

```
cd util
../TOOLS/recup_my_ORCHIDEE login_svn perso/martial.mancip my_email
```

Enter your password when asked for (several times).



2.1 HOW TO USE DOXYGEN (CONTINUED)

5. Create makefiles

```
./ins_make -v
```

6. Compile documentation

```
cd ../modeles/ORCHIDEE  
./makeorchidee_fcm -rmdoc -doc
```

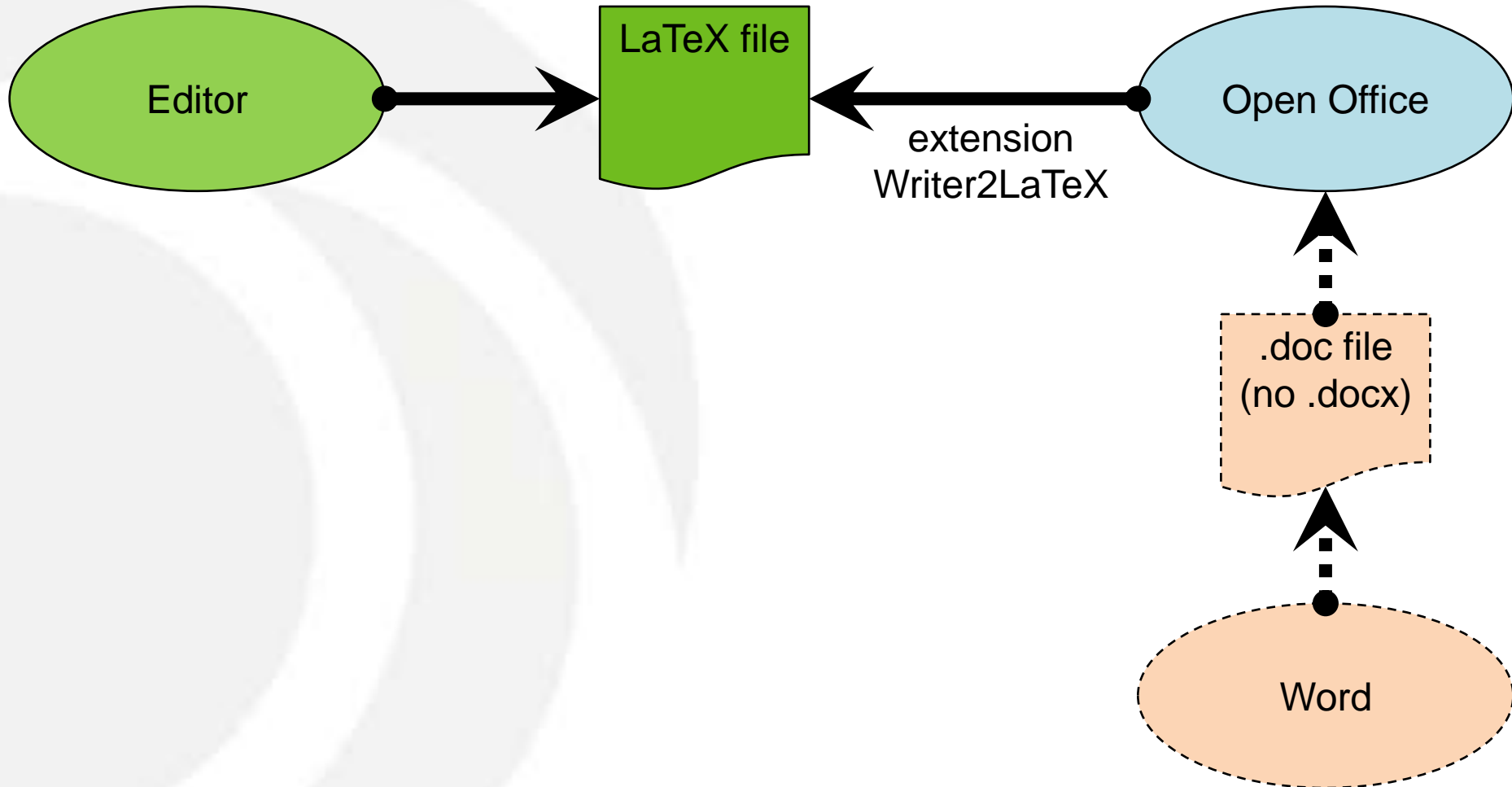
→ Creation of modeles/ORCHIDEE/docs/

latex/refman.pdf

html/index.html



2.2 SUPPLEMENTARY TOOLS



- Start working on the content as soon as possible.
- Meet regularly with your binomial/trinomial.
- You can send files to the Documentation group for testing.

