

**CM62-LR-pi-JZ-01** : CM62 Anciens poids

```
* branches/ORCHIDEE_2_2/ORCHIDEE revision 6594
* LMDZ6/trunk revision 3651
* NEMO_v3.6_STABLE revision 9455
* Shaconemo revision 287
```

**CM65v6-LR-pi-JZ-03** : CM65 Anciens poids

```
* branches/ORCHIDEE_2_2/ORCHIDEE revision 6594
* LMDZ6/trunk revision 3651
* NEMOv4.0.3 revision 14491
```

**CM65v406-LR-pi-06** : CM65 Nouveaux poids avec bug sur le calving dans cpl\_mod.F90

```
* branches/ORCHIDEE_2_2/ORCHIDEE revision 6594
* LMDZ6/trunk revision 3651
* NEMOv4.0.6 revision 14599
```

**CM65v406-LR-pi-NWGHT-02** : CM65 Nouveaux poids v1 et correction du bug sur le calving

```
* branches/ORCHIDEE_2_2/ORCHIDEE revision 6594
* LMDZ6/trunk revision 3651 + modif cpl_mod.F90
* NEMOv4.0.6 revision 14599
```

**CM65v407-LR-pi-01** : CM65 Nouveaux poids v2 et correction du bug sur le calving

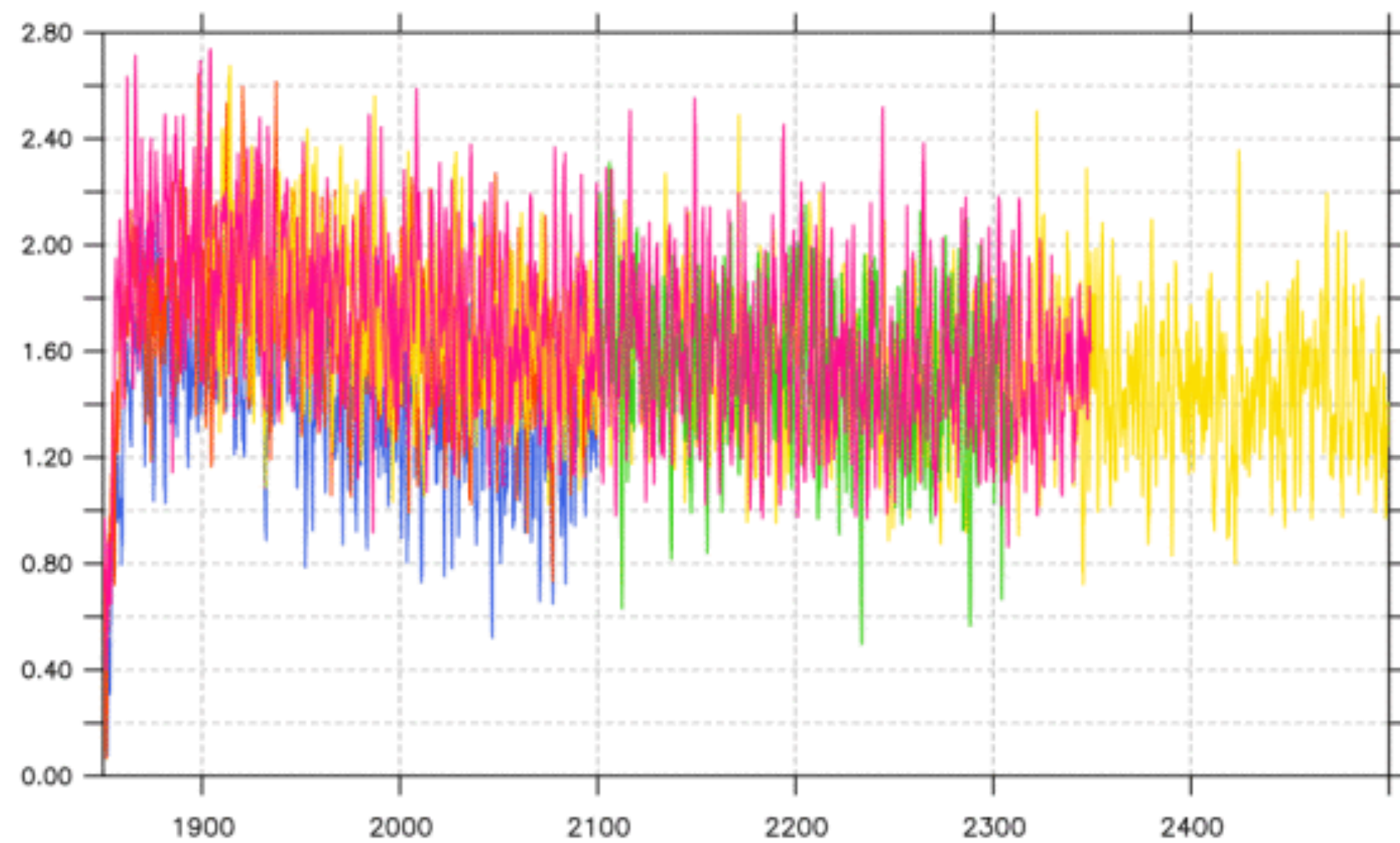
```
* branches/ORCHIDEE_2_2/ORCHIDEE revision 6594
* LMDZ6/trunk revision 3651 + modif cpl_mod.F90
* NEMOv4.0.7 revision 14599
```

**CM65v420-LR-SKL-pi-05** : CM65 Nouveaux poids

```
* branches/ORCHIDEE_2_2/ORCHIDEE revision 7576
* LMDZ6/trunk revision 4125
* NEMOv4.2.0/tag revision HEAD
```

ATM\_bils\_global\_ave.nc

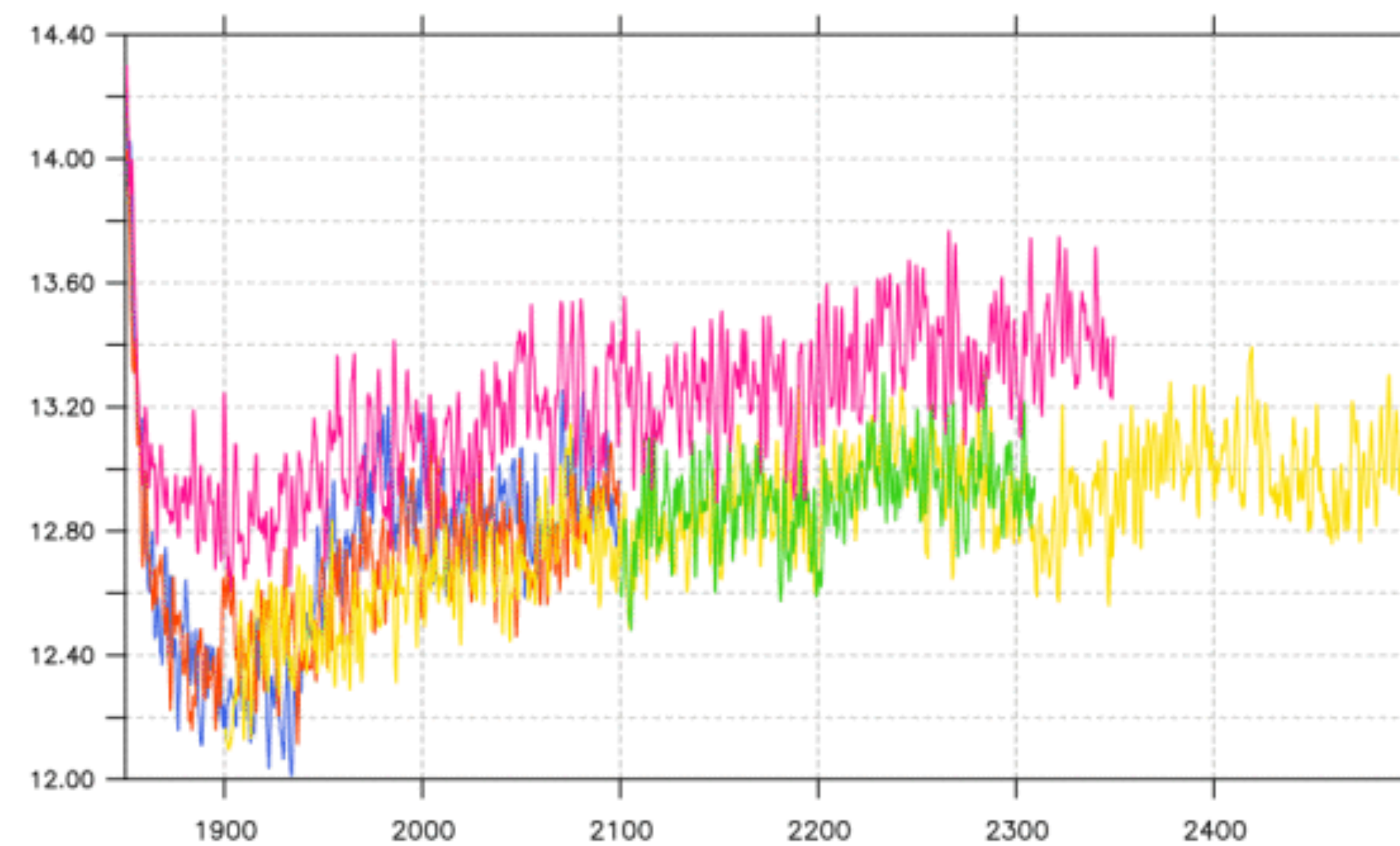
BILS\_GLOBAL ( ) (@SBX:12)



— CM62-LR-pi-JZ-01  
— CM65v6-LR-pi-JZ-03  
— CM65v406-LR-pi-NWGHT-02  
— CM65v407-LR-pi-01  
— CM65v420-LR-SKL-pi-05

ATM\_t2m\_global\_prio\_ave.nc

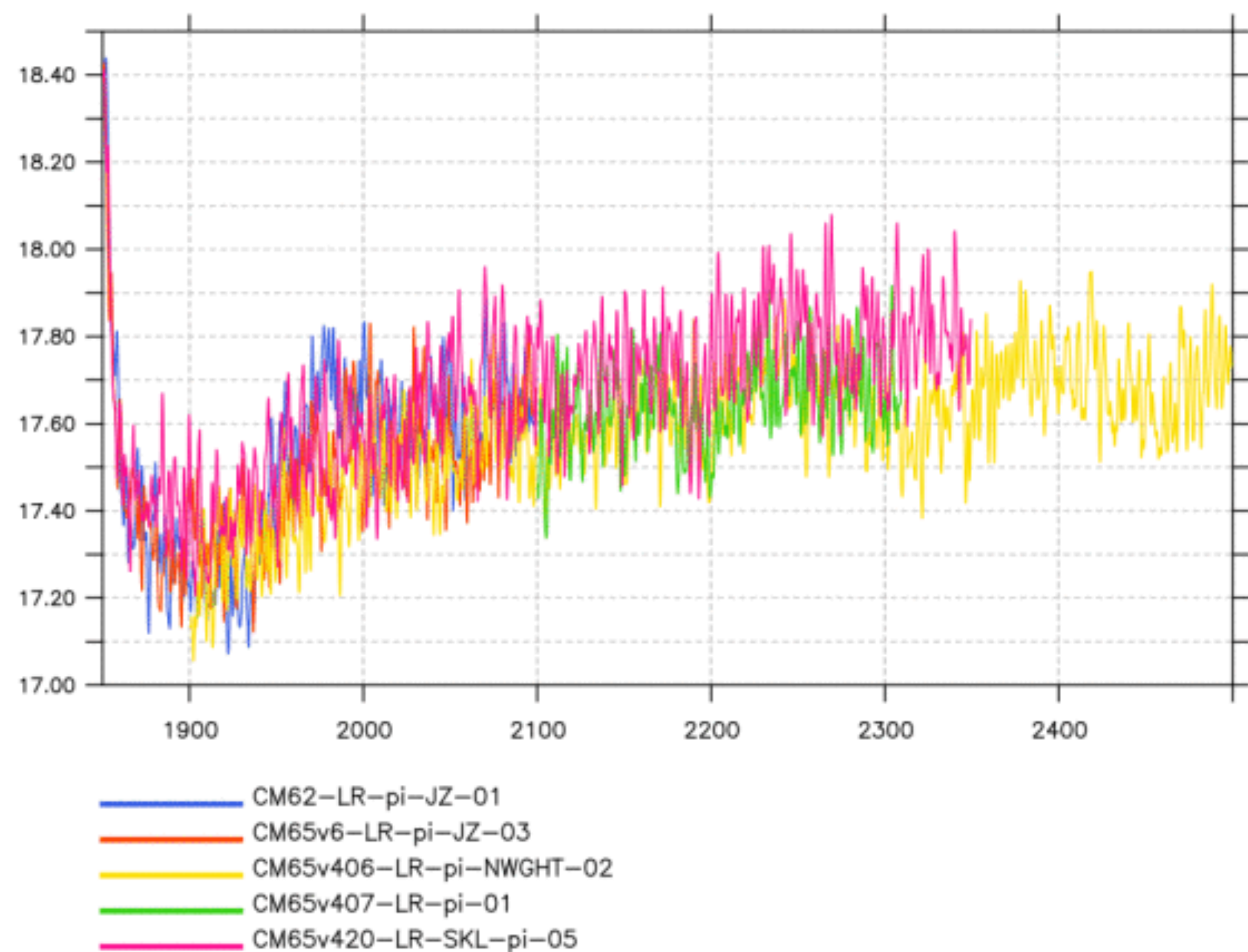
Temperature at 2 meters (GLOBAL) (degrees C) (@SBX:12)



— CM62-LR-pi-JZ-01  
— CM65v6-LR-pi-JZ-03  
— CM65v406-LR-pi-NWGHT-02  
— CM65v407-LR-pi-01  
— CM65v420-LR-SKL-pi-05

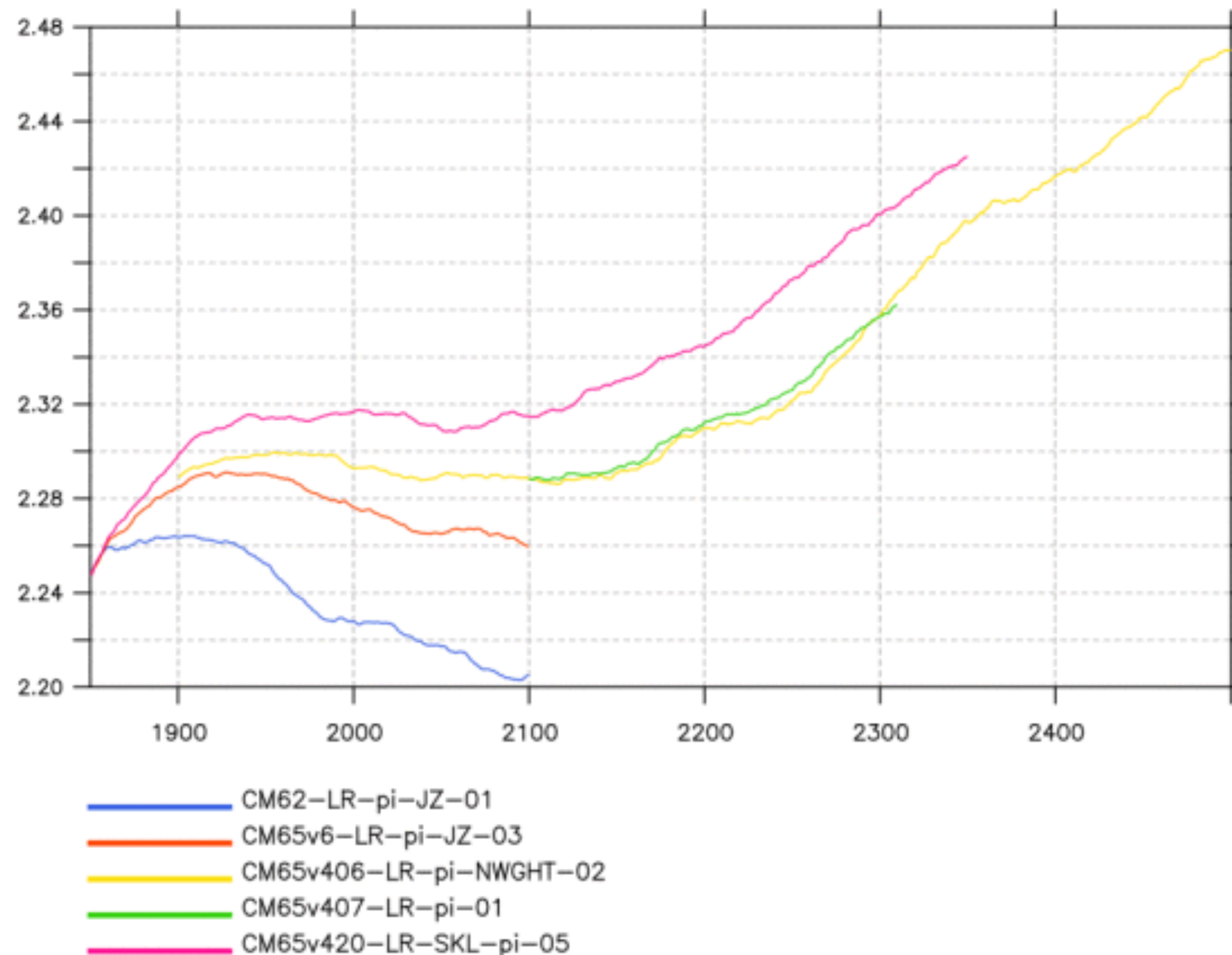
OCE\_sosstsst\_global\_prio\_ave.nc

Sea Surface Temperature (GLOBAL) (degC) (@SBX:12)



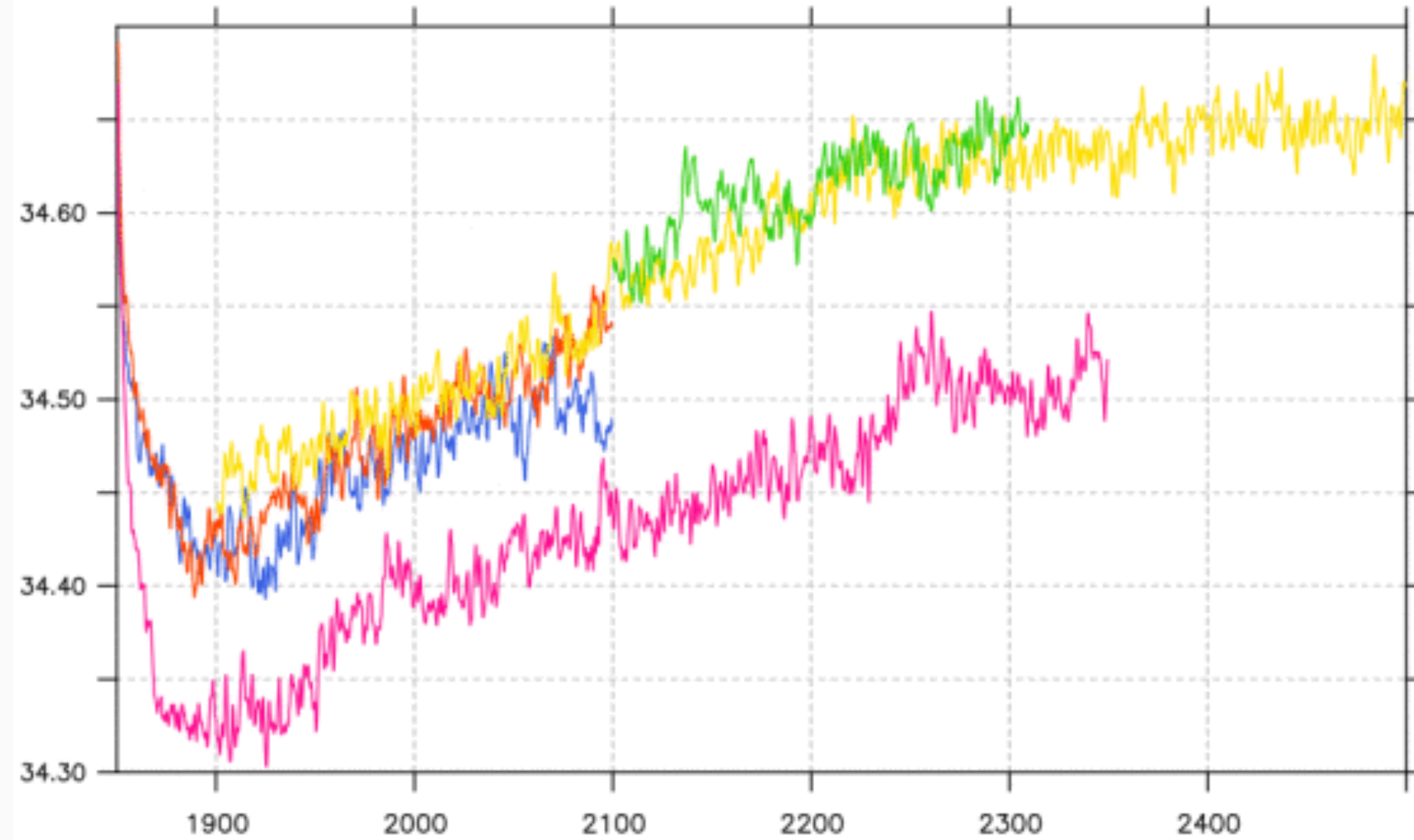
theta\_2000m\_ave.nc

Sea Water temperature @2000m (degC) (@SBX:12)



OCE\_sosaline\_global\_ave.nc

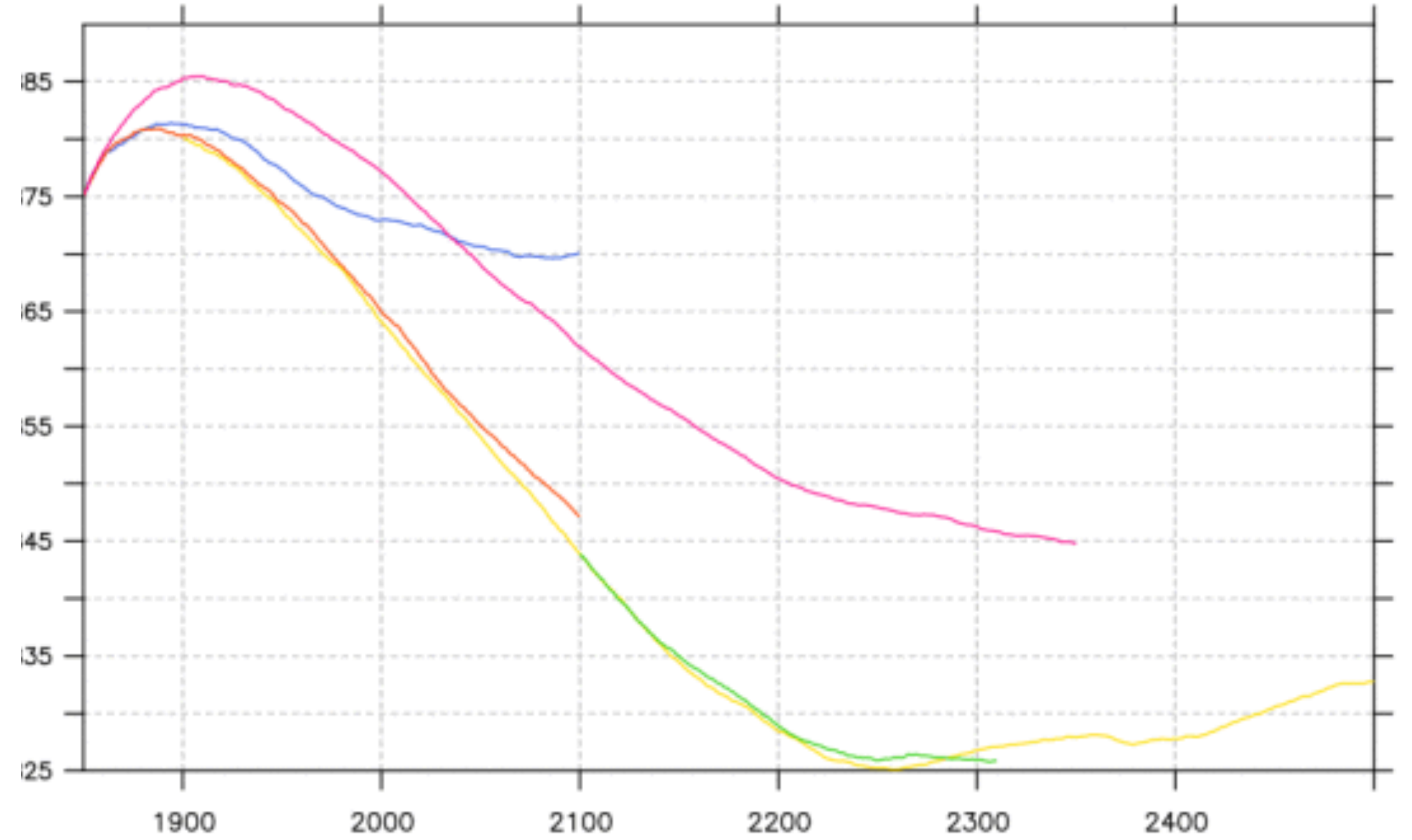
SOSALINE\_GLOBAL ( ) (@SBX:12)



CM62-LR-pi-JZ-01  
 CM65v6-LR-pi-JZ-03  
 CM65v406-LR-pi-NWGHT-02  
 CM65v407-LR-pi-01  
 CM65v420-LR-SKL-pi-05

CE\_so\_2000m\_ave.nc

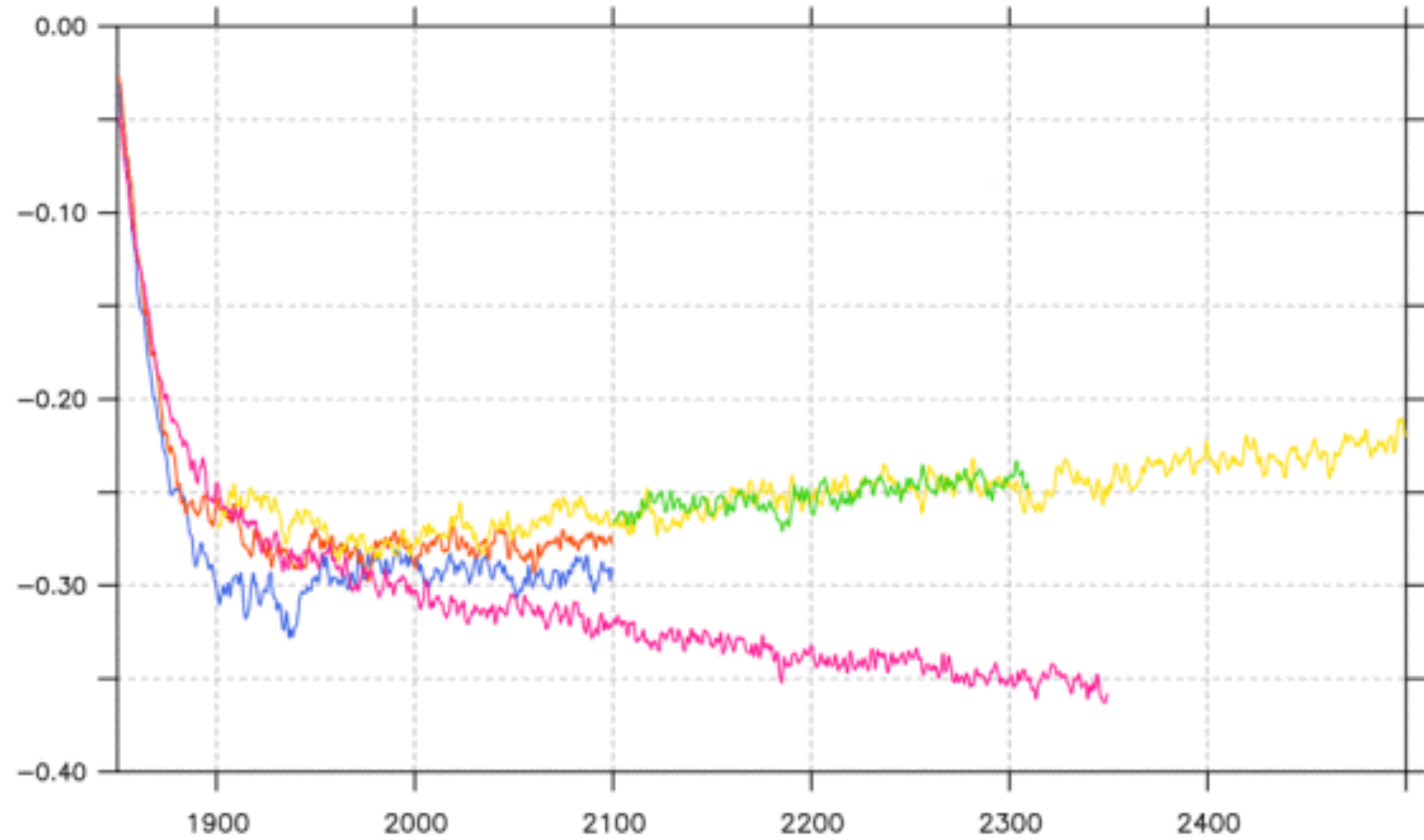
Sea Water Salinity @2000m (PSU) (@SBX:12)



CM62-LR-pi-JZ-01  
 CM65v6-LR-pi-JZ-03  
 CM65v406-LR-pi-NWGHT-02  
 CM65v407-LR-pi-01  
 CM65v420-LR-SKL-pi-05

OCE\_sossheig\_global\_ave.nc

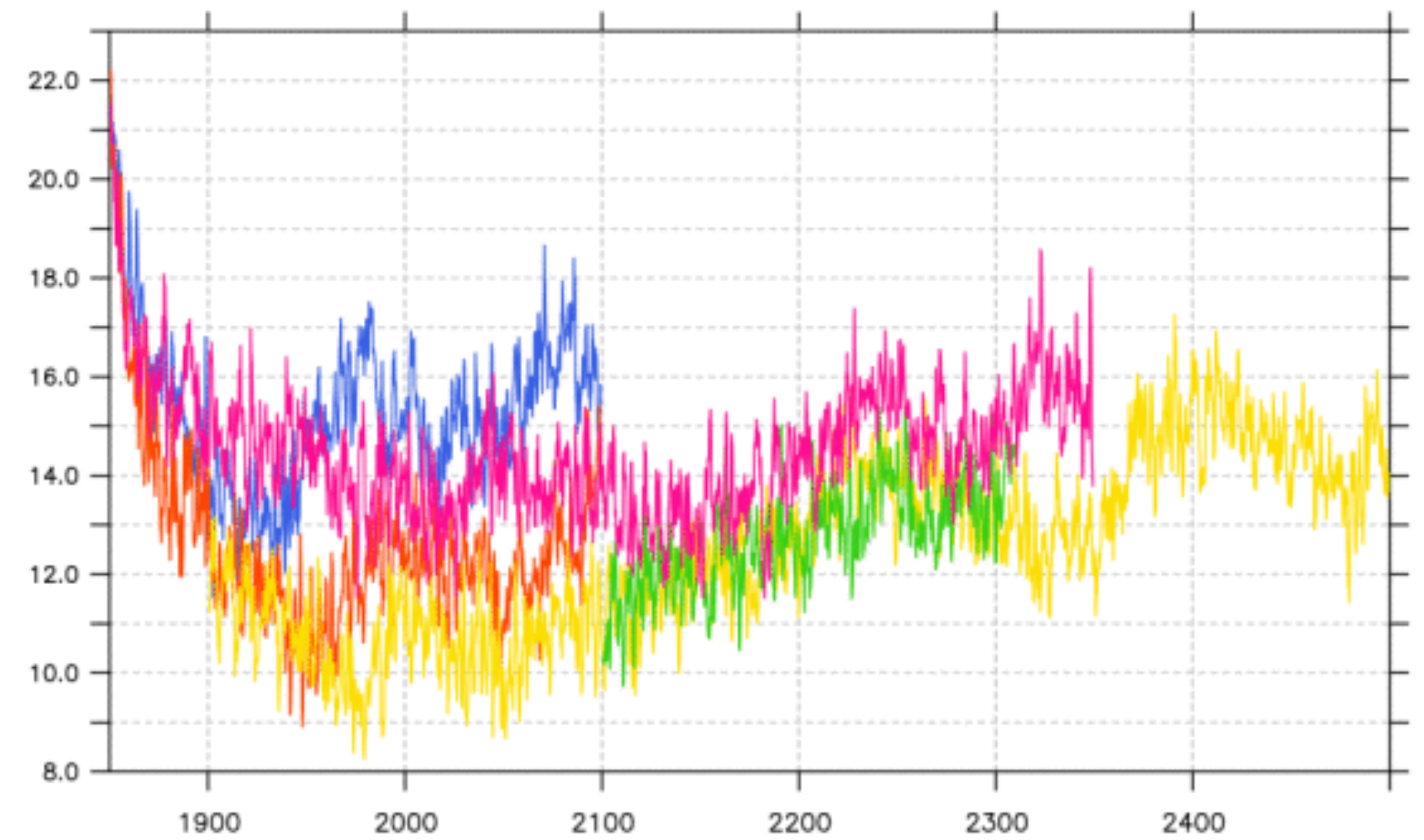
SOSSHEIG\_GLOBAL ( ) (@SBX:12)



- CM62-LR-pi-JZ-01
- CM65v6-LR-pi-JZ-03
- CM65v406-LR-pi-NWGHT-02
- CM65v407-LR-pi-01
- CM65v420-LR-SKL-pi-05

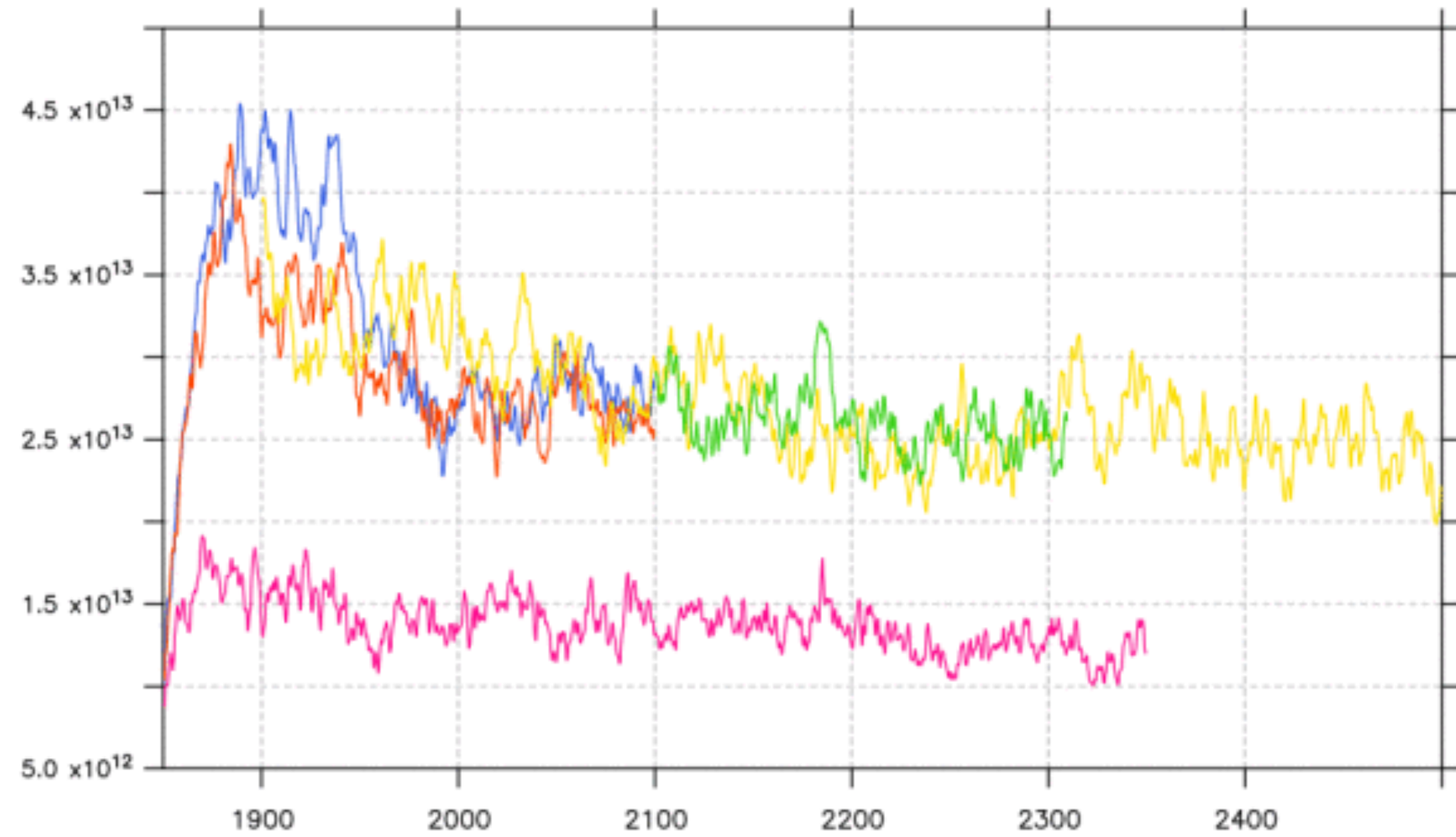
OCE\_nadw\_ocean\_prio\_ave.nc

North Atlantic Deep Water (Sv) (@SBX:12)



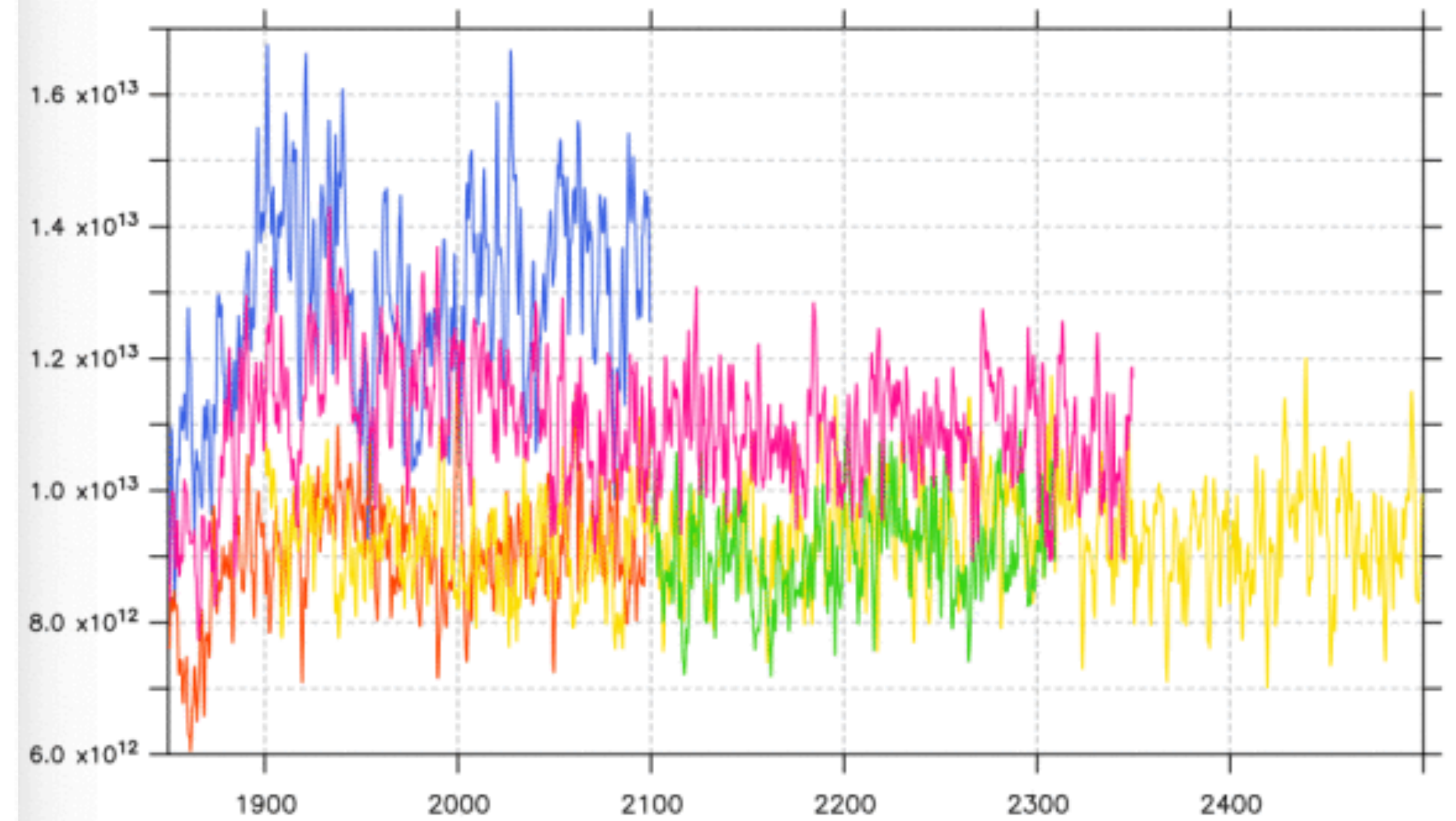
- CM62-LR-pi-JZ-01
- CM65v6-LR-pi-JZ-03
- CM65v406-LR-pi-NWGHT-02
- CM65v407-LR-pi-01
- CM65v420-LR-SKL-pi-05

ICE\_icevol\_north\_ave.nc

Ice Volume (NORTH) (m<sup>3</sup>) (@SBX:12)

— CM62-LR-pi-JZ-01  
 — CM65v6-LR-pi-JZ-03  
 — CM65v406-LR-pi-NWGHT-02  
 — CM65v407-LR-pi-01  
 — CM65v420-LR-SKL-pi-05

ICE\_icevol\_south\_ave.nc

Ice Volume (SOUTH) (m<sup>3</sup>) (@SBX:12)

— CM62-LR-pi-JZ-01  
 — CM65v6-LR-pi-JZ-03  
 — CM65v406-LR-pi-NWGHT-02  
 — CM65v407-LR-pi-01  
 — CM65v420-LR-SKL-pi-05

